



Mazda Credit*

When choosing car finance, whether you are a private or business customer, it is important to find the package that best suits your needs. Mazda Credit provides attractive and innovative, flexible solutions which are convenient and easy to arrange for both new and used cars. Your Mazda Dealer can provide a Mazda Credit* financing quotation specifically tailored for you.

Mazda Service Promise

Every Mazda vehicle has been built to ensure reliability and driving pleasure for all customers. All new Mazda cars come with:

3-year Mazda European Assistance

Taking the worry out of travel with fast, reliable and expert Mazda European Roadside Assistance if your Mazda suffers a breakdown, is stolen or is involved in an accident.

3-year New Vehicle Warranty

The Mazda New Vehicle Warranty applies for 3 years up to 100,000 km. Typical wearing parts are not covered by this warranty.

12-year Corrosion Warranty

The warranty against corrosion breakthrough lasts 12 years. Your Mazda authorised dealer / repairer will carry out a free visual inspection of the vehicle once a year.

3-year Paintwork Warranty

The Mazda paintwork warranty lasts 3 years, regardless of mileage. If any problems with the paintwork arise during this period, they will be rectified by a Mazda authorised dealer / repairer, provided the manufacturer is responsible for the defects.

Mazda Digital Service Record

Since 2005, Mazda has been introducing the Digital Service Record (DSR) with every new Mazda model. The Mazda Digital Service Record (DSR) system provides increased security against counterfeit service documents and odometer tampering, and makes it easy to keep the service history up to date. Stored on a central database, the DSR replaces the traditional paper service book and ensures a secure, accurate and permanent service history for the life of the vehicle. For further information, please ask your Mazda authorised repairer.

Mazda Parts & Accessories

Competitively priced but manufactured to the highest quality, carefully engineered for a perfect fit and faultless performance. Covered for 24 months from the date of fitting.

Your Mazda dealer:

Mazda Motor Ireland reserves the right to introduce changes in specification and equipment due to its ongoing product development. Colour and trim samples shown in this brochure may vary from the actual colours because of limitations in the printing process. It is recommended that you consult your Mazda dealer when referring to these.

Lending criteria and terms and conditions apply. *Mazda Credit is a registered trading name of Bank of Ireland Leasing Ltd. The Mazda and Mazda Credit trademarks are owned by Mazda Motor Corporation and are used under licence.

January 2009

**Internet: www.mazda.ie
Mazda Helpline: 1850 535 7000 (LoCall)**



WORLD CAR OF THE YEAR



Part No: MIMRL1022 01/09 (BJN 305759/IRLV6)



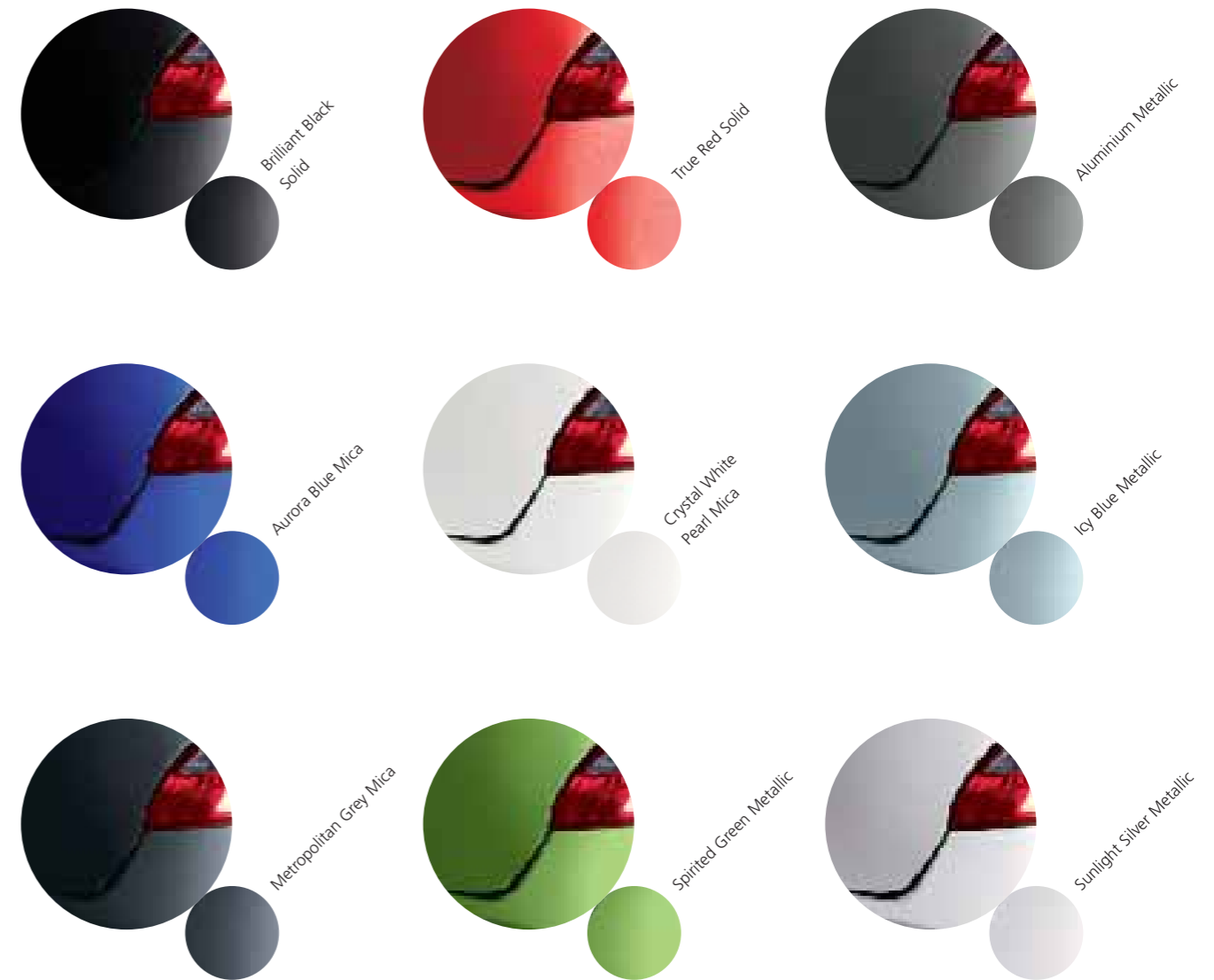
Introducing the Mazda2.

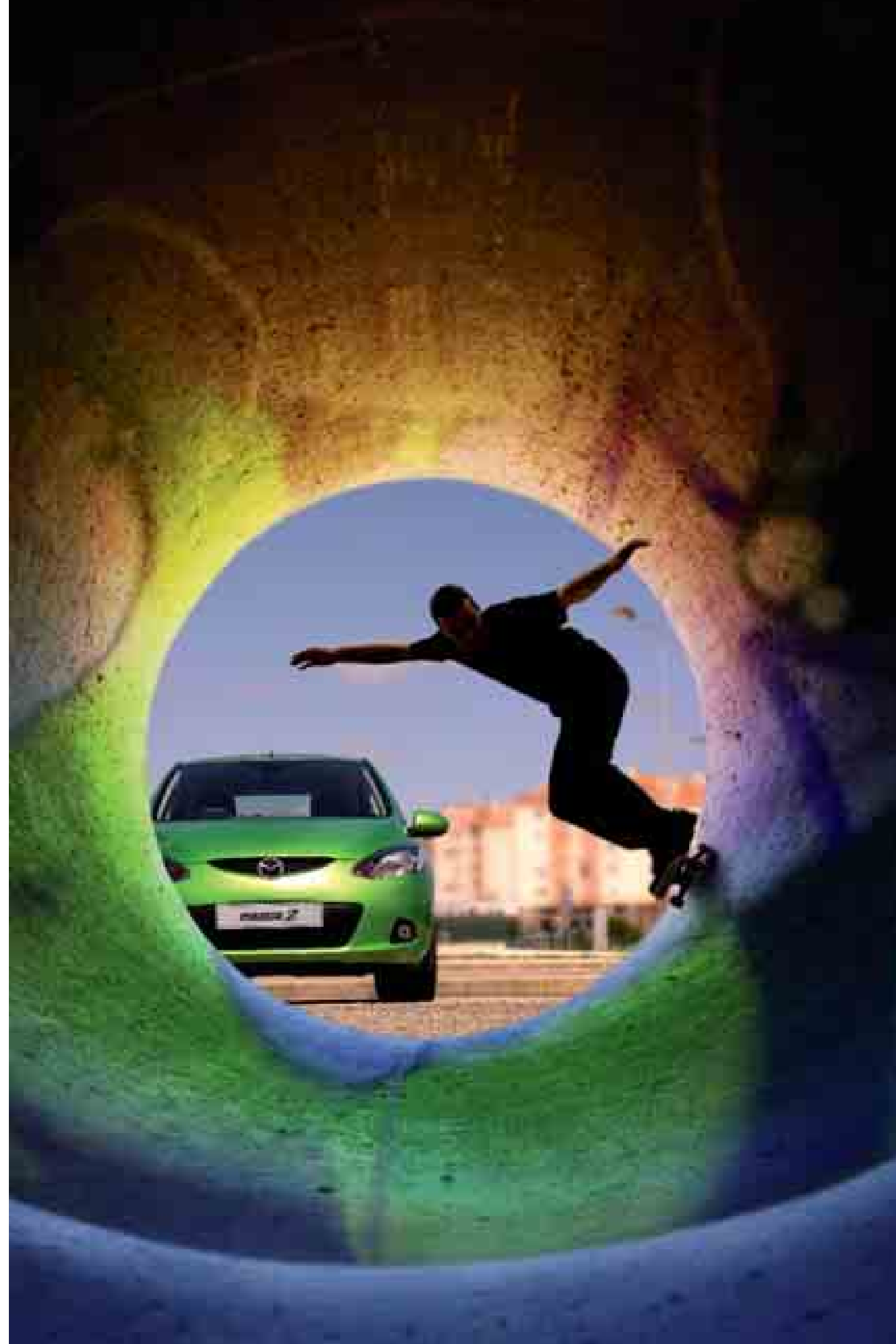


Fly. In the face of convention

It's a rare pleasure when a car comes along that defies the norm – flying in the face of convention. The Mazda2 is just such a car.

Displaying an individual style when other cars are looking increasingly alike; lighter and more fuel-efficient when other cars are getting heavier and thirstier; smaller and more agile when other cars are getting larger and more unwieldy: the Mazda2 is proof that avoiding the obvious choice can sometimes be the obvious choice...







The power. To move you

The Mazda2 is a true driver's car – so it's available with your choice of responsive 1.3 (75ps), 1.3 (86ps) or 1.5 (103ps) petrol engines – plus an advanced common-rail turbocharged 1.4 (68ps) diesel. Each of these engines is designed to produce ample torque at low revs, perfect for quick acceleration around town. They also combine with the Mazda2's light weight to provide agile handling, with accurate responses to your steering and throttle inputs, plus power when you need it for rapid overtaking manoeuvres.





Keen. To create the right impression

Mazda2's irresistible looks and dynamic handling are complemented with the introduction of a sporty 3dr version. With no compromise on interior space and easy entry and exit, the front seats tip and slide forward, providing wide access points for rear passengers.

Poised. For action

Mazda2 3dr looks every inch the sporting coupé, with aggressively sloped side contours, unique design side skirts and flared wheel arches. Just like the 5dr version, it provides a perfect combination of driving thrills and safety.

Vehicles shown for illustrative purposes only, and may not be to Ireland specification.







mazda 2

Style. With substance

The Mazda2's blend of sharp contours and soft curves combines with the steeply sloping waistline and distinctive headlights to give the car a sporty, dynamic appearance: even standing still, it looks poised to leap forward. The Mazda2 Touring model is equipped with stylish alloy wheels and electric folding body-coloured door mirrors, and the Sport and Sport SE models really stand out amongst the crowd with projector-type headlights and front fog lights, a body-coloured sports grille, side skirts, a sports front bumper as well as a rear sports spoiler.

Vehicles shown for illustrative purposes only, and may not be to Ireland specification.





Everything. In the right place

The Mazda2 is designed to interact with you. So it doesn't just have power steering – it has Electric Power Assisted Steering (EPAS) that feels neither too heavy nor too light, reduces steering effort at low parking speeds and is combined with a quick steering ratio for easy manoeuvring on busy urban roads as well as providing excellent stability at high speeds. Similarly, quick, effortless gearshifts are easy thanks to the high-mounted short-throw gear lever, and the front seats offer best-in-class adjustability, so you can find the perfect driving position. And you can enjoy the extra convenience of cruise control and a speed alarm in the Sport SE, plus electric folding mirrors and steering wheel-mounted remote audio controls in the Touring, Sport and Sport SE.





Light. Years ahead

The same weight-saving 'gram strategy' that helps Ireland's favourite sports car, the Mazda MX-5, perform so well, has been applied to the Mazda2. For example, the bodyshell uses high-tensile steels that make the car quieter, extremely strong and, when combined with numerous other weight-saving measures, lightweight, at less than 1,000kg. This means that whichever lightweight Mazda2 you choose, it will perform better, sip less fuel and produce lower CO₂ emissions.



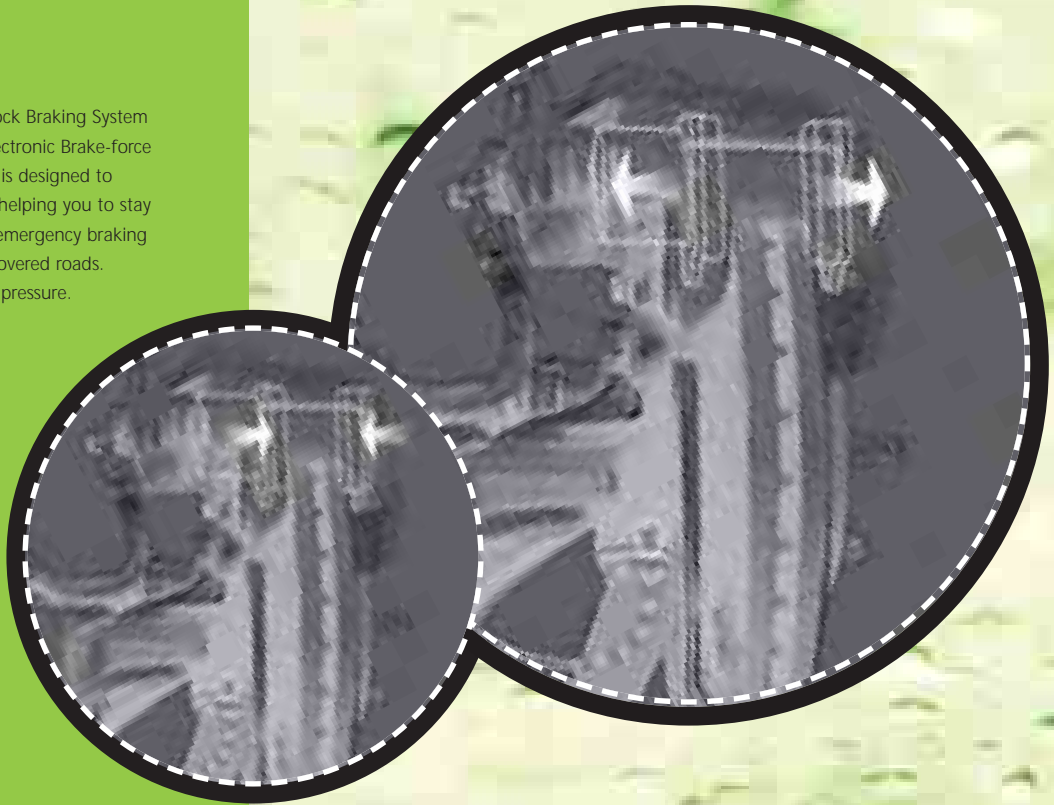
Less weight. More go

Each new generation of 'superminis' is getting larger and heavier. Inevitably, this makes them slower, thirstier and less agile. The Mazda2 is different. It's lighter, making it faster, more fuel-efficient and more fun to drive. It's also got a lightweight, sports-tuned chassis. So it's quick to react to your inputs – whether from the steering wheel, throttle or brake pedal – making it ideal for nipping in and out of busy city traffic, easier to park and perfect for that spur-of-the-moment country getaway.



4W-ABS

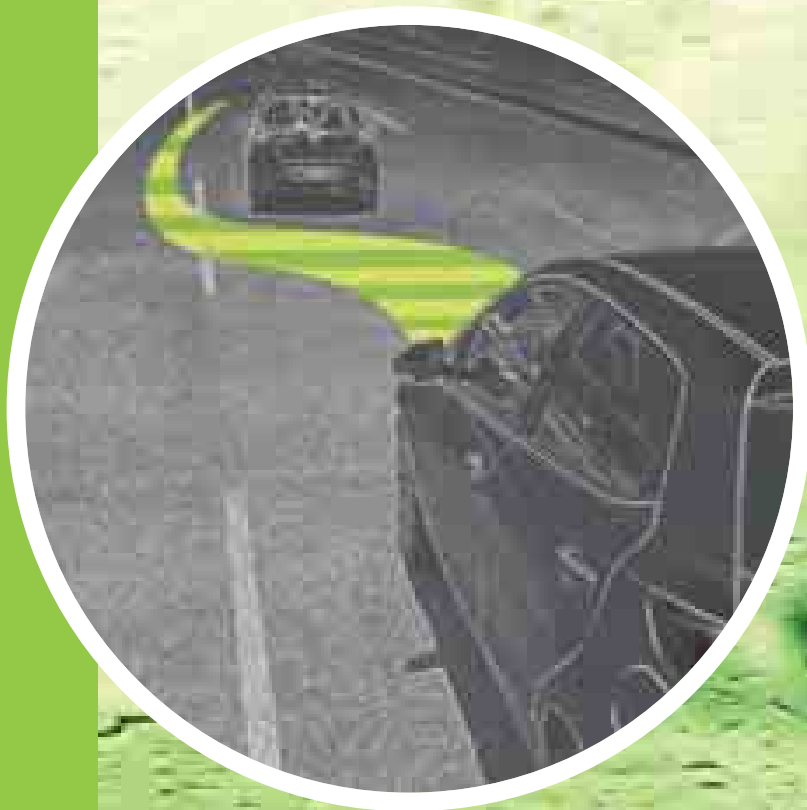
Four-wheel Anti-lock Braking System (4W-ABS) with Electronic Brake-force Distribution (EBD) is designed to prevent skidding, helping you to stay in control during emergency braking on wet or snow-covered roads. Surefooted under pressure.



DSC system*

Dynamic Stability Control (DSC) enhances driving stability when cornering and during rapid evasive manoeuvres by automatically limiting engine power and applying the brakes on individual wheels, thus maintaining control in situations when the vehicle might otherwise tend to oversteer or understeer.

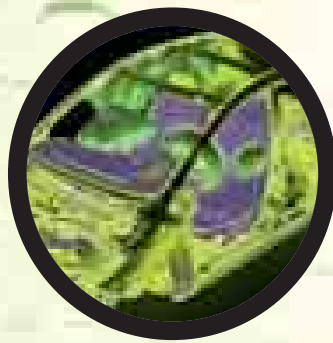
* Available on 1.5 Sport SE.



Safe and secure

The Mazda2 has been designed to keep you and your family safe.

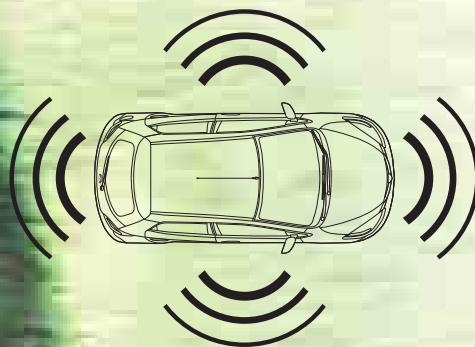
The lightweight, extremely rigid bodyshell forms a strong defensive cage around those inside. This is complemented by the extra protection offered by crumple zones plus, in the rear, ISOFIX anchorages help keep your kids safely secured.



Airbags

Driver and front passenger side and curtain airbags* combine with front seatbelt pre-tensioners and load-limiters to significantly reduce the likelihood of injury in a collision.

* Side and curtain airbags standard on Touring, Sport and Sport SE models.



Security

An alarm and immobiliser as standard on all Mazda2 models helps deter unwanted attention.



The Mazda2 5dr provides the optimal adult occupant protection with a maximum 5-star Euro NCAP rating proving it is one of the safest cars in its class.

Mazda2: The range



Mazda2
Comfort and
Comfort SE



Mazda2
Touring



Mazda2
Sport and
Sport SE





Comfort and Comfort SE key features:

Available in 3dr and 5dr bodystyles

- 15" steel wheels.
- Radio / CD / MP3 player and auxiliary jack.
- ABS with Emergency Brake Assist (EBA) and Emergency Brake-force Distribution (EBD).
- Electric Power Assisted Steering (EPAS).
- Driver and front passenger airbags.
- ISOFIX anchors (rear seats).
- Remote central locking with deadlocking and jack-knife key.
- Electric front windows and electrically adjustable mirrors.
- Alarm and immobiliser.
- Manual air conditioning (Comfort SE).

Additional Touring features over the Comfort SE:

Available in 3dr and 5dr bodystyles



- 15" alloy wheels.
- Steering wheel remote audio controls.
- Body-coloured, folding and heated electric mirrors.
- Side and curtain airbags.
- Body-coloured door handles.
- 60/40 split rear seats.
- Leather steering wheel and gear knob.

Additional Sport and Sport SE features over the Touring:

Available in 5dr bodystyles

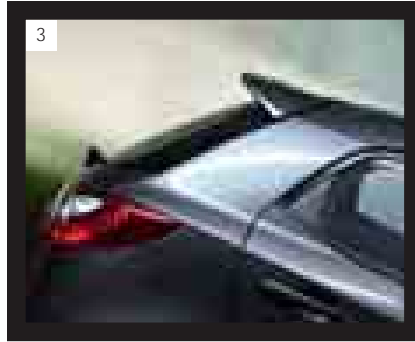
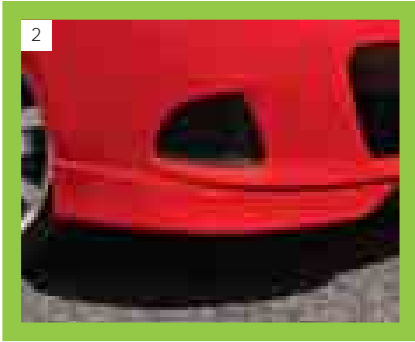


- 16" alloy wheels.
- Front fog lights.
- Sports styling kit, including sports grille, spoiler, front and rear sports bumper and side skirts.
- Rear electric windows (Sport SE).
- Auto lights and rain-sensing wipers (Sport SE).
- Climate control air conditioning (Sport SE).
- Trip computer (Sport SE).
- Dynamic Stability Control (DSC) and Traction Control System (TCS) (Sport SE).
- Cruise control and speed alarm (Sport SE).
- Projector type headlights.



Vitality

Enhance your Mazda2's lively character with a choice of sporty exterior accessories.

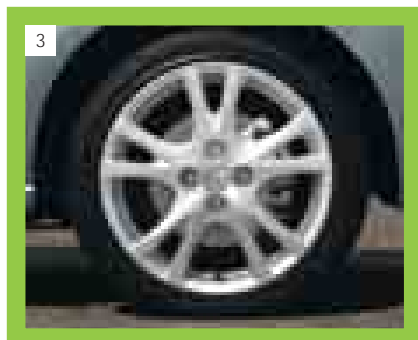
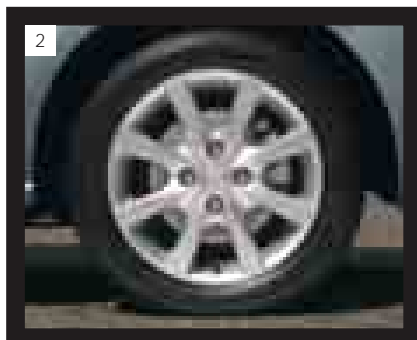
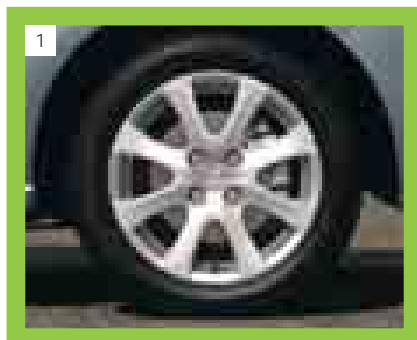


- 1 Sports front aero bumper, side airdam skirts, rear roof spoiler and fog lights.
- 2 Front spats.
- 3 Rear roof spoiler.
- 4 Side marker ring.

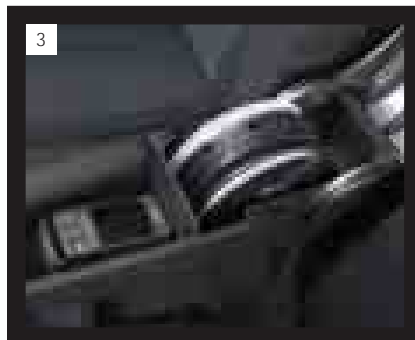
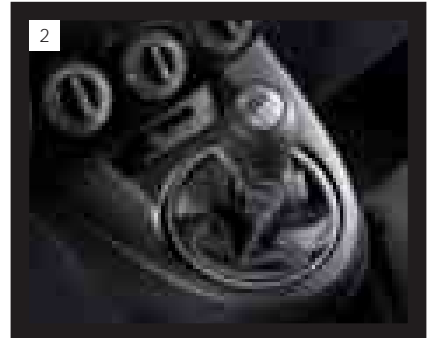


True grip

Stunning alloy wheels and a wide range of styling enhancements are available to really make your Mazda2 just exactly that: your Mazda2.



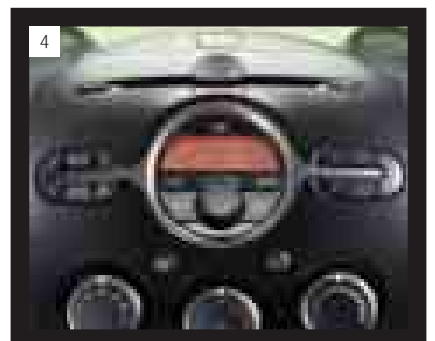
- 1 15" alloy wheel.
- 2 15" 'Exclusive' design alloy wheel.
- 3 16" alloy wheel.
- 4 16" titanium alloy wheel with 195/45 R16 tyre.



Inviting

Make yourself at home with a choice of tasty accessories that add a little extra to the interior of your Mazda2.

- 1 Alloy pedal set and footrest.
- 2 Sports gear knob.
- 3 Front armrest with stowage.
- 4 MP3 compatible 6-CD Autochanger.

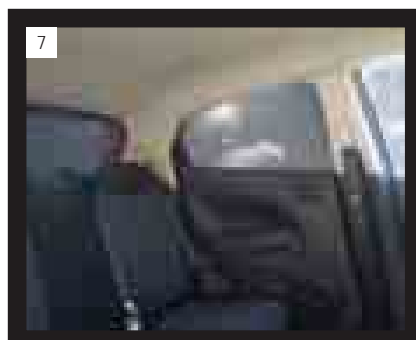
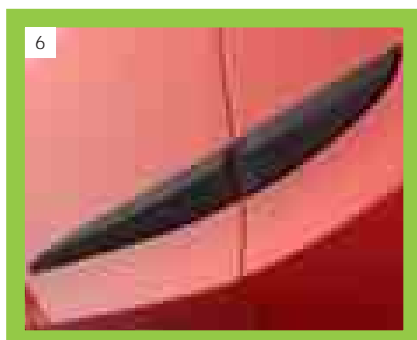
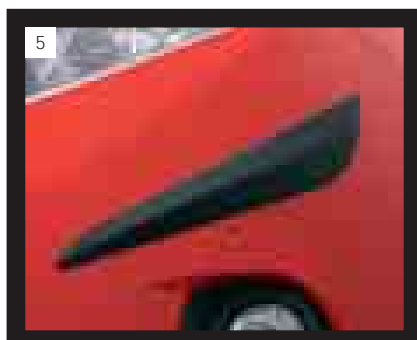
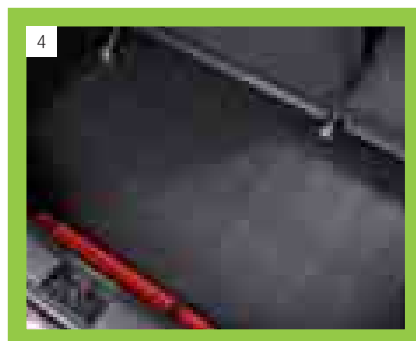
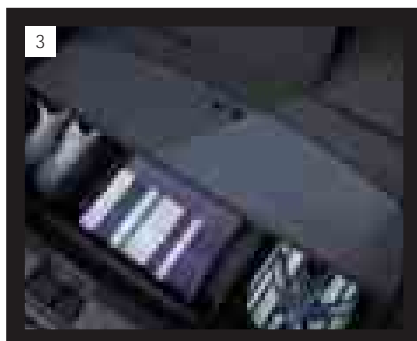




- 1 Luxury carpet mats.
- 2 Trunk storage shelf.
- 3 Trunk organiser stowage box.
- 4 Trunk liner.
- 5 Bumper corner protector.
- 6 Door side protector.
- 7 Sunblinds for rear windows.

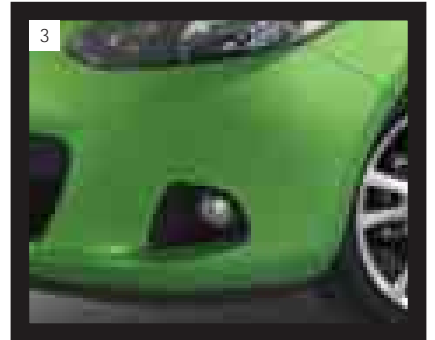
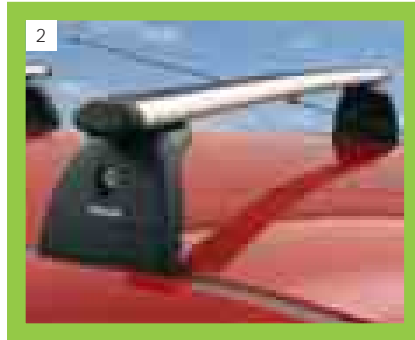
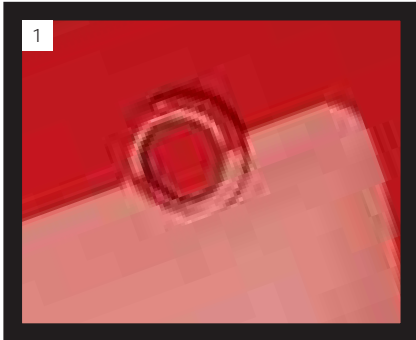
Protecting

Finishing touches to help keep your Mazda2 looking its best.



Reassuring

Make the most of the great outdoors in comfort and safety.



- 1 Front and rear parking distance sensors.
- 2 Roof bar system.
- 3 Fog lights.



Mechanical Features and Model Availability

Engines:

- 1.3 MZR Petrol
- 1349cc in-line 4-cylinder, 16-valve, DOHC, front-mounted, developing 75ps (55kW) at 6000rpm and 121Nm at 3500rpm.
 - CO₂ emissions of 125g/km (EC Stage IV).
 - Powertrain Control Module (PCM).
 - Battery – 55D23L.
- 1.3 MZR Petrol
- 1349cc in-line 4-cylinder, 16-valve, DOHC, front-mounted, developing 86ps (63kW) at 6000rpm and 122Nm at 3500rpm.
 - CO₂ emissions of 125g/km (EC Stage IV).
 - Powertrain Control Module (PCM).
 - Battery – 55D23L.
- 1.5 MZR Petrol
- 1498cc in-line 4-cylinder, 16-valve, DOHC, front-mounted, developing 103ps (76kW) at 6000rpm and 137Nm at 4000rpm.
 - CO₂ emissions of 135g/km (EC Stage IV).
 - Powertrain Control Module (PCM).
 - Battery – 55D23L.
- 1.4 MZ-CD Diesel
- 1399cc in-line 4-cylinder, 8-valve, SOHC, front-mounted, developing 68ps (50kW) at 4000rpm and 160Nm at 2000rpm.
 - CO₂ emissions of 107g/km (EC Stage IV).
 - Common-rail fuel injection.
 - Turbocharger.
 - Powertrain Control Module (PCM).
 - Battery – 80D26L.

Transmissions:

- 5-speed manual – Giving precise, positive shift feel to provide a feeling of unity between driver and vehicle.

Body:

- High-rigidity and torsion-resistant all-steel body with defined crumple zones for the front and rear sections, stable passenger safety cell with side impact reinforcement in the doors.
- Supplementary Restraint System (SRS) comprising central control unit and crush sensors, seatbelt pre-tensioners, load-limiters and front airbags.
- Mazda Advanced Impact Distribution and Absorption System designed to secure the critical interior space in the event of an accident.

Chassis and Suspension:

- Front: Independent suspension with MacPherson struts, lower A-arms, torsion bar.
- Rear: Twist-beam, coil springs, trailing arms (Torsion Beam).

Brake System:

- Hydraulic, diagonally divided dual circuit system with power brake unit.
- Anti-lock Braking System (ABS) with Electronic Brake-force Distribution (EBD) and Emergency Brake Assist (EBA).
- Front: 258mm ventilated disc brakes.
- Rear: 200mm drum brakes.
- Mechanical parking brake acting on rear wheels.

Model Availability

	Comfort	Comfort SE	Touring	Sport*	Sport SE*
1.3 MZR 5-speed manual (75ps)	■	■	–	–	–
1.3 MZR 5-speed manual (86ps)	–	–	■	■	–
1.5 MZR 5-speed manual (103ps)*	–	–	–	–	■
1.4 MZ-CD 5-speed manual (68ps)*	■	■	■	–	–

■ = Available, – = Not available. *5dr only.

Technical Data

Engine Type	1.3 MZR Petrol	1.3 MZR Petrol	1.5 MZR Petrol	1.4 MZ-CD Diesel
Displacement (cc)	1349	1349	1498	1339
Bore x stroke (mm)	74.0 x 78.4	74.0 x 78.4	78.0 x 78.4	73.7 x 82.0
Valves per cylinder	4	4	4	2
Maximum output [ps (kW) / rpm]	75 (55) / 6000	86 (63) / 6000	103 (76) / 6000	68 (50) / 4000
Maximum torque (Nm / rpm)	121 / 3500	122 / 3500	137 / 4000	160 / 2000
Compression ratio	10.0:1	10.0:1	10.0:1	18.0:1

Transmission

Type	5-speed manual	5-speed manual	5-speed manual	5-speed manual
Gear ratios:				
1st	3.416	3.416	3.416	3.583
2nd	1.842	1.842	1.842	1.925
3rd	1.290	1.290	1.290	1.281
4th	0.972	0.972	0.972	0.951
5th	0.775	0.775	0.775	0.756
Reverse	3.214	3.214	3.214	3.620
Final gear ratio	3.850	3.850	4.105	3.370

Steering

Steering gear	Power assisted	rack and pinion		
Minimum turning circle (kerb to kerb) (m)	4.9	4.9	4.9	4.9

Performance and Economy

Acceleration (0-100km/h in sec)	14.0	12.9	10.4	15.5
Top speed (km/h)	168	172	188	162
Fuel consumption ¹⁾ l/100km (mpg):				
Urban	6.9 (40.9)	6.9 (40.9)	7.6 (37.2)	5.1 (53.3)
Extra Urban	4.2 (67.2)	4.2 (67.2)	4.7 (60.1)	3.5 (80.7)
Combined	5.2 (54.3)	5.2 (54.3)	5.7 (49.5)	4.2 (67.2)
CO ₂ emissions ¹⁾ (g/km)	125	125	135	107
EC emission level	EC Stage IV	EC Stage IV	EC Stage IV	EC Stage IV
Recommended fuel	Unleaded 95 RON	Unleaded 95 RON	Unleaded 95 RON	Diesel
Fuel tank capacity (litres)	42.8	42.8	42.8	42.8

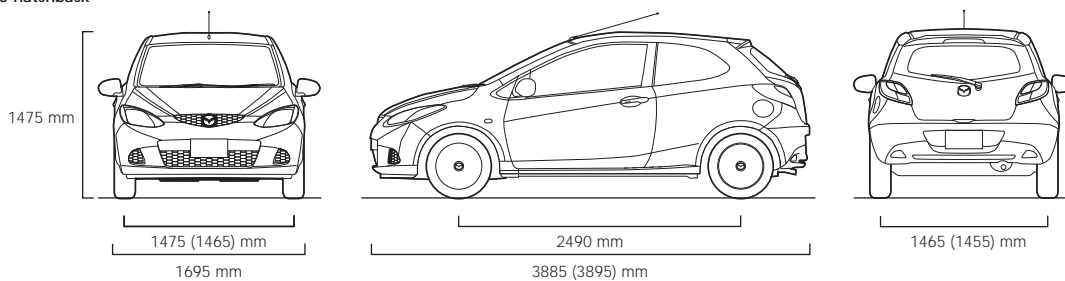
¹⁾ Fuel consumption and CO₂ emissions values according to 1999/100/EC.

Technical Data

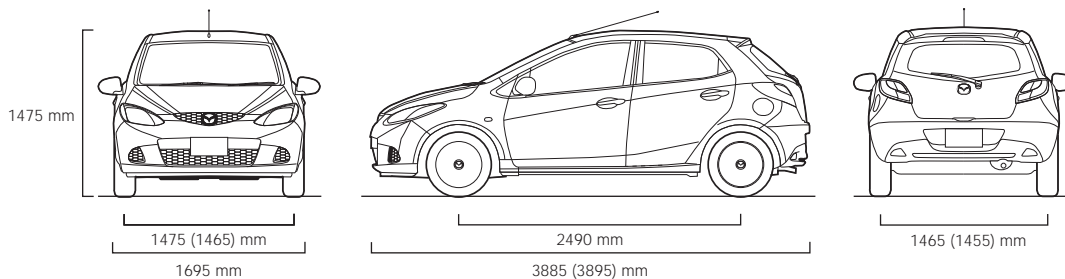
Dimensions and Weights

	1.3 MZR Petrol	1.3 MZR Petrol	1.5 MZR Petrol	1.4 MZ-CD Diesel
Overall length / width / height (mm)	3885 / 1695 / 1475	3885 / 1695 / 1475	3895 / 1695 / 1475	3885 / 1695 / 1475
Ground clearance between the axles – unladen (mm)	150	150	150	150
Track (mm):				
Front (15" / 16")	1475	1475	1465	1475
Rear (15" / 16")	1465	1465	1455	1465
Wheelbase (mm)	2490	2490	2490	2490
Cargo volume, acc. to VDA (l):				
5-seat mode (to seatback)	250	250	250	250
2-seat mode (to belt line)	469	469	469	469
2-seat mode (to roof)	787	787	787	787
Brakes (mm):				
Ventilated front disc diameter	258	258	258	258
Rear drum diameter	200	200	200	200
Permitted gross vehicle weight (kg)				
3-hatchback	1455	1455	–	–
5-hatchback	1480	1485	1485	1520
Permitted axle load, front / rear (kg)				
3-hatchback	775 / 735	775 / 735	–	–
5-hatchback	785 / 750	790 / 750	790 / 750	835 / 740
Towing limit (kg):				
Unbraked	500	500	500	500
Braked (12% gradient)	900	900	900	800
Kerb weight (kg) incl. driver (75 kg)				
3-hatchback	1025	1025	–	–
5-hatchback	1030	1030	1035	1055
Maximum roof load (kg)	50	50	50	50

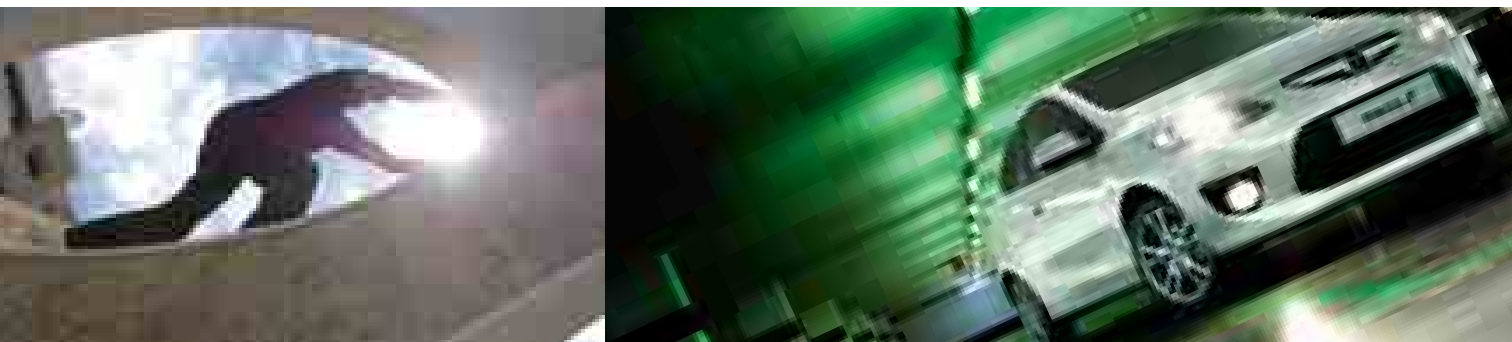
3-hatchback



5-hatchback



(Figures in brackets relate to Sport models)



Equipment

Safety and Security

		For image, see pg	Comfort	Comfort SE	Touring	Sport	Sport SE
Mazda Advanced Impact Distribution and Absorption System engineered 'Triple H' body structure to help protect occupants from impact forces			●	●	●	●	●
Supplementary Restraint System (SRS) – Central control unit with crush sensors, seatbelt pre-tensioners, load-limiters and front airbags			●	●	●	●	●
Four-wheel Anti-lock Braking System (4W-ABS) with Electronic Brake-force Distribution (EBD) and Emergency Brake Assist (EBA)	18		●	●	●	●	●
Dynamic Stability Control (DSC) and Traction Control System (TCS)	18		–	–	–	–	●
Driver and front passenger airbags	19		●	●	●	●	●
Front side and front and rear curtain airbags	19		–	–	●	●	●
Seatbelts: Front, 3-point (ELR) with pre-tensioners and load-limiters			●	●	●	●	●
Rear, 3-point x3 (ELR)			●	●	●	●	●
ISOFIX child seat anchorages			●	●	●	●	●
Alarm and immobiliser	19		●	●	●	●	●

Exterior

Tyres and wheels:	185/55 R15 tyres on 15" steel wheels with wheel covers		●	●	–	–	–
	185/55 R15 tyres on 15" alloy wheels	24	○	○	●	–	–
	195/45 R16 tyres on 16" titanium alloy wheels	24	○	○	○	●	●
	Temporary spare tyre (space saver)		●	●	●	●	●
Bumpers:	Body colour, front and rear		●	●	●	●	●
Door handles:	Black		●	●	–	–	–
	Body-coloured		–	–	●	●	●
Heated rear window			●	●	●	●	●
Wipers:	Front and rear, with intermittent wipe and electric wash		●	●	●	●	–
	Front, with rain sensor (tied to automatic headlights)		–	–	–	–	●
Halogen complex reflector headlights with manual headlight levelling			●	●	●	●	–
Automatic light sensing headlights			–	–	–	–	●
Front fog lights		21	–	–	–	●	●
Sports styling kit including projector type headlights with front and rear sports bumper, side skirts and rear spoiler		22	–	–	–	●	●
Chrome exhaust extension (petrol only)			●	●	●	●	●
High-mounted stop light			●	●	●	●	●
Door mirrors:	Electrically adjustable, black-coloured		●	●	–	–	–
	Electrically adjustable, heated folding mirrors, body-coloured		–	–	●	●	●
Metallic / mica paint			○	○	○	○	○

Additional Exterior Options

Tyres and wheels:	185/55 R15 tyres on 15" 'Exclusive' design alloy wheels	24	Please contact your dealer for further information and availability.
	195/45 R16 tyres on 16" 'Exclusive' design titanium alloy wheels		
Bumpers:	Front and rear bumper corner protector	26	
	Side protector (can be painted to match vehicle colour)	26	
Front fog lights		27	
Sports styling kit	Front sports bumper	22	
	Side airdam skirts	22	
	Rear spoiler	22	
Clear side indicator			
Side marker ring		23	
Front spats		23	
Sport exhaust:	By Remus		

● = Standard, ○ = Option, at extra cost, – = Not available.

Equipment

Additional Exterior Options

For image, see pg

Park Assist sensor:	Rear acoustic signal		Please contact your dealer for further information and availability
	Front and rear acoustic signal	27	
Roof bar system:	Ski / snowboard attachment	for four pairs of skis or two snowboards	
		for six pairs of skis or four snowboards	
	Bicycle attachment		
	Roof box : L x W x H: 175 x 82 x 45cm, volume 450 litres		
Tow bar:	Detachable type		
	Tow bar harness (available in 7-pin and 13-pin)		

Comfort and Convenience

Remote central door locking (with 'jack-knife' type retractable key) and deadlocking		●	●	●	●	●
Power steering		●	●	●	●	●
Cruise control (switches located on steering wheel)	21	-	-	-	-	●
Electric windows:	Front, with one-touch auto up and down on driver's side	●	●	●	●	-
	Front and rear, with one-touch auto up and down on driver's side	-	-	-	-	●
Air conditioning:	Front, manual	-	●	●	●	-
	Front, automatic climate control	21	-	-	-	●
Sunvisors:	Driver's, with covered vanity mirror and ticket holder	●	●	●	●	●
	Front passenger's, with covered vanity mirror	-	-	●	●	●
Remote opening fuel cap		●	●	●	●	●

Additional Comfort and Convenience Options

Floor mats:	Carpet floor mats 'Standard'		Please contact your dealer for further information and availability
	Carpet floor mats 'Luxury'	26	
Sunblinds:	For side rear windows, frame type with fixing kit	26	
	For rear window, frame type with fixing kit	26	

● = Standard, ○ = Option, at extra cost, - = Not available.



Equipment

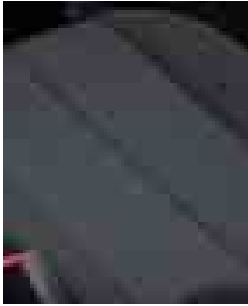
Interior Features		For image, see pg	Comfort	Comfort SE	Touring	Sport	Sport SE
Front seats:	Driver's, height-adjustable with height-adjustable head restraint		●	●	●	●	●
Rear seats:	One-piece fold rear bench		●	●	–	–	–
	60/40 split rear seats	21	–	–	●	●	●
	Three height-adjustable head restraints		●	●	●	●	●
Steering wheel:	Black, urethane		●	●	–	–	–
	Black, leather-wrapped with silver inserts	21	–	–	●	●	●
Gear knob:	Black, plastic	21	●	●	–	–	–
	Black, leather-wrapped with silver finish		–	–	●	●	●
Door interior handles:	Front and rear, black		●	●	–	–	–
	Front and rear, silver		–	–	●	●	●
Door switch panel:	Front, silver		●	●	●	●	●
Instrument panel outer air vents:	Front, with silver inserts		●	●	●	●	●
Grab handles:	Front passenger		●	●	●	●	●
Coat hook:	Rear x 1		●	●	●	●	●
Audio systems:	AM/FM radio / MP3-compatible / single CD player and AUX jack socket, two speakers		●	●	–	–	–
	AM/FM radio / MP3-compatible / single CD player and AUX jack socket, four speakers		–	–	●	●	–
	AM/FM radio / MP3-compatible / single CD player and AUX jack socket, six speakers		–	–	–	–	●
	Steering wheel-mounted remote audio controls	21	–	–	●	●	●
Instrument panel:	Black facia with white dials		●	●	●	●	–
	Black facia with blackout dials		–	–	–	–	●
	Tachometer		●	●	●	●	●
	Trip computer with speed alarm and exterior temperature gauge		–	–	–	–	●
Seatbelt warning lamp		●	●	●	●	●	
Centre console, floor-mounted with cup holder		●	●	●	●	●	
Further storage spaces:	Door pockets with bottle holder (driver and passenger)		●	●	●	●	●
	Passenger's glove box with magazine rack	21	●	●	●	●	●
	Rear tray on floor console		●	●	●	●	●
	Two instrument panel upper pockets (driver's side)		●	●	●	●	●
	Instrument panel lower box (driver's side)		●	●	●	●	●
Interior lights:	Header-mounted courtesy light		●	●	●	●	●
	Luggage area light		●	●	●	●	●
Luggage area cover		●	●	●	●	●	

Additional Interior Options

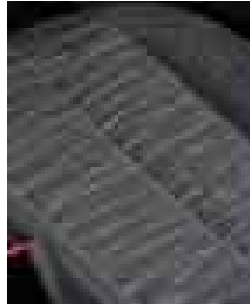
Armrest:	Black / silver with stowage	25	Please contact your dealer for further information and availability
Floor pedals:	Aluminium	25	
Footrest:	Aluminium	25	
Gear knob:	Aluminium, leather-wrapped	25	
Audio system:	AM/FM radio / MP3 compatible 6-CD Autochanger	25	
Further storage spaces:	Cargo storage shelf (below tonneau cover)	26	
Luggage compartment:	Trunk liner	26	
	Trunk box, black	26	

● = Standard, ○ = Option, at extra cost, – = Not available.

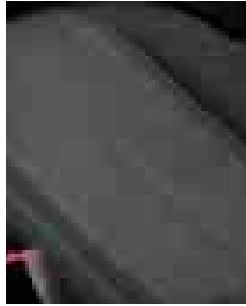
Colours and Seat Trims



Charcoal black



Black



Black sports

Model	Comfort and Comfort SE	Touring and Sport	Sport SE
Seat trim colour	Charcoal black	Black	Black sports
Solid Body Colours			
Brilliant Black	■	■	■
True Red	■	■	■
Metallic Body Colours*			
Aluminium Metallic	■	■	■
Aurora Blue Mica	■	■	■
Crystal White Pearl Mica	■	■	■
Icy Blue Metallic	■	■	■
Metropolitan Grey Mica	■	■	■
Spirited Green Metallic	■	■	■
Sunlight Silver Metallic	■	■	■

■ = Available, *Option at extra cost.